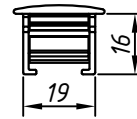
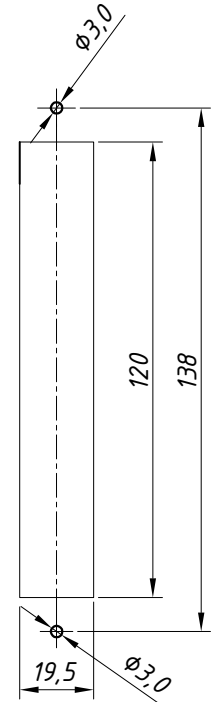


Janeiro/2015

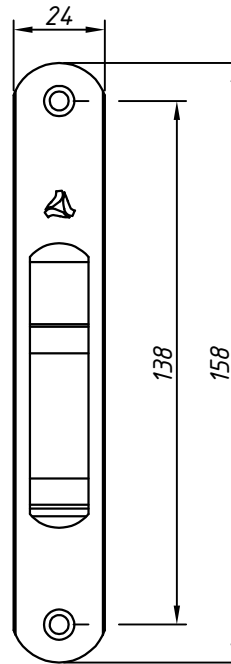
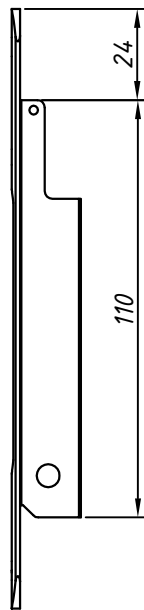
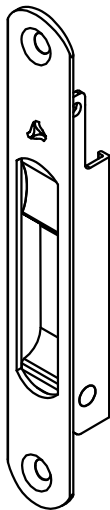
DIMENSÕES:
(escala 1:2)



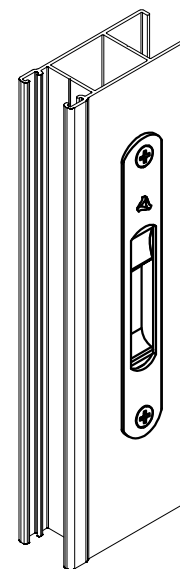
USINAGEM:
(escala 1:2)



PERSPECTIVA:
(sem escala)



DETALHE DE APLICAÇÃO:
(Sem escala)



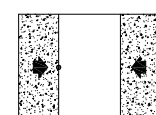
CARACTERÍSTICAS:

Componentes:	Matéria-prima:
Estrutura	Alumínio
Parafusos	Aço Inox

Acabamento Anodizado e Pintado			
Branco	Fosco	Preto	Bronze

Embalagem	20 Conchas cegas
	40 Parafusos

CÓDIGO	ACABAMENTO
CON-0130BC	Branco
CON-0130FS	Fosco
CON-0130PT	Preto
CON-0130BZ	Bronze



JANELAS
E PORTAS
DE CORRER