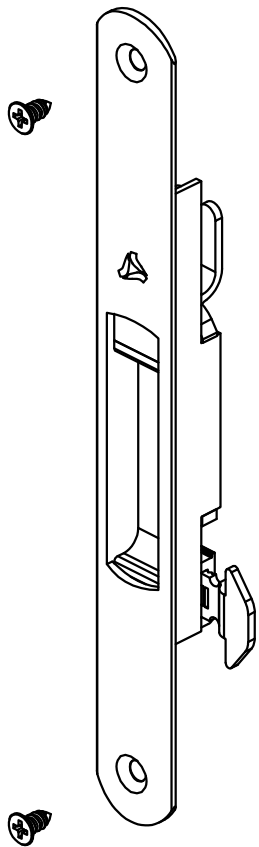
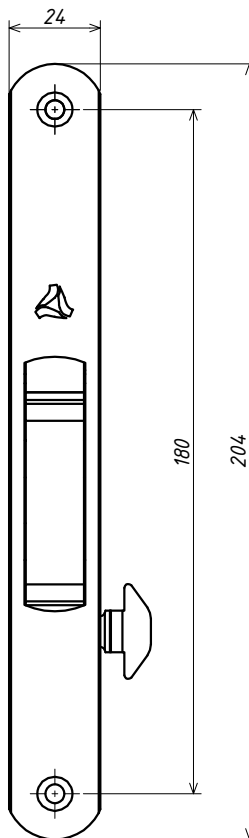
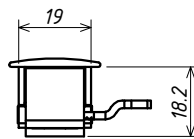
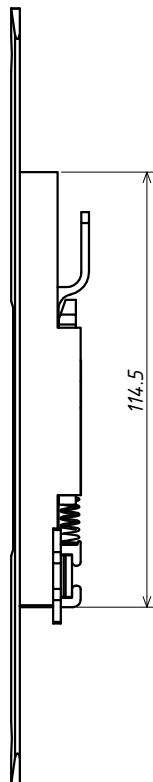


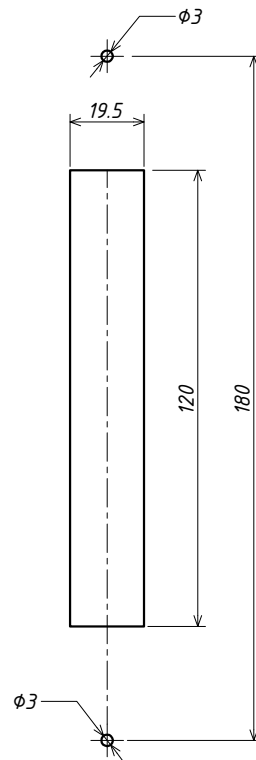
PERSPECTIVA:  
(sem escala)



DIMENSÕES:  
(escala 1:2)



USINAGEM:  
(escala 1:2)



CÓDIGO:	APLICAÇÃO TRAVA / LINHAS
LIN-03	Inova® e Master®
LIN-04	25®, 30®, Suprema®, Gold®, Mega 32®, Absoluta®, MP®, Hydro Official®, Madeira, SP20® e D'oro®

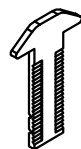
**CARACTERÍSTICAS:**

Componentes:	Matéria-prima:
Estrutura	Alumínio
Lingueta	Aço Inox
Parafusos	Aço Inox
Limitador	Poliamida
Acabamentos	Poliamida

Acabamento Anodizado e Pintado

Preto      Fosco      Branco

Embalagem	20 Fechos
	20 Linguetas
	40 Parafusos

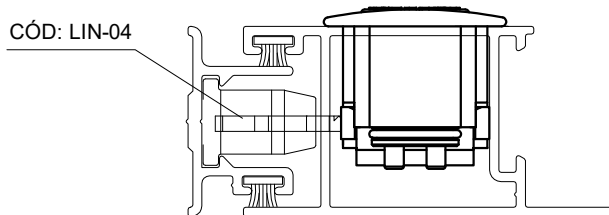


**ATENÇÃO:**

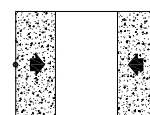
VERIFICAR QUAL O TIPO DE TRAVA IDEAL PARA O PROJETO

CÓD: LIN-04    CÓD: LIN-03

DETALHE DE APLICAÇÃO:  
(sem escala)



CÓDIGO	ACABAMENTO
FEC-1041 (Manual)	Preto
FEC-10410 (Manual)	Fosco
FEC-1041EB (Manual)	Branco
FEC-1042 (Autom.)	Preto
FEC-10420 (Autom.)	Fosco
FEC-1042EB (Autom.)	Branco



JANELAS  
E PORTAS  
DE CORRER