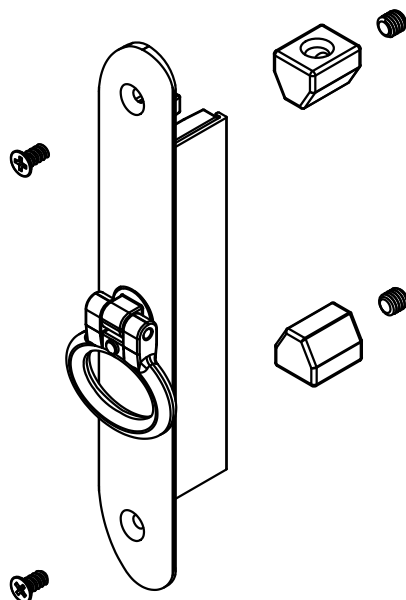
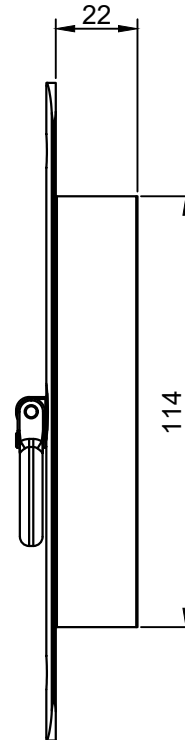
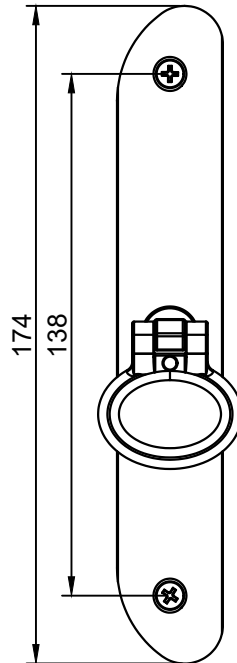


Setembro/2014

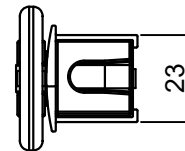
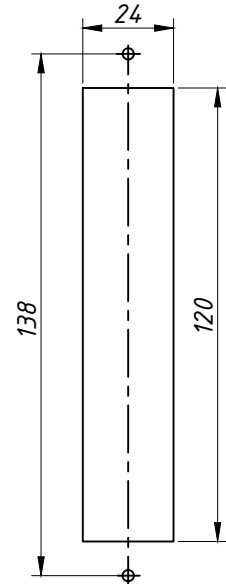
PERSPECTIVA
(sem escala)



DIMENSÕES:
(escala 1:2)



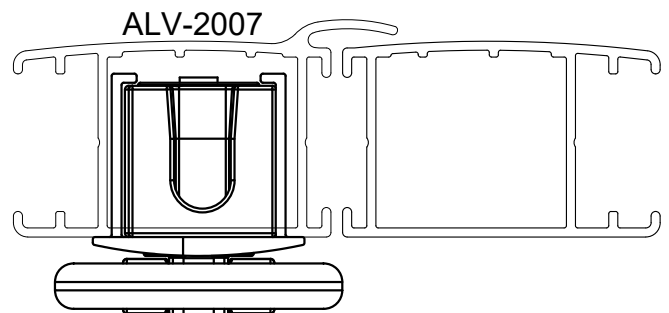
USINAGEM:
(escala 1:2)



Fórmula para o corte da haste de 1/4" - ALV-2075
 $C=(A-105)/2$

C=comprimento da haste
A=altura do montante da veneziana

DETALHE DE APLICAÇÃO
(escala 1:1)



CARACTERÍSTICAS:

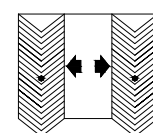
Componentes:	Matéria-prima:
Base	Alumínio
Guias	Poliamida
Alça	Zamac
Parafusos	Aço Inox

Acabamento

Preto Fosco Branco

Embalagem 20 cremonas
40 engates para haste
40 Parafusos

CÓDIGO	ACABAMENTO
FEC0696PT	Preto
FEC0696FS	Fosco
FEC0696BC	Branco



JANELAS
E PORTAS
CAMARÃO