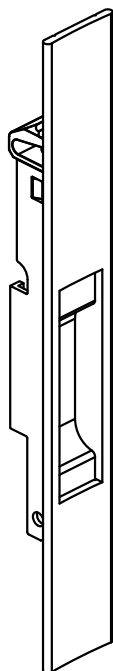
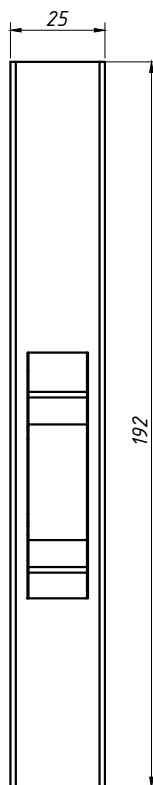
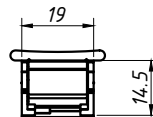
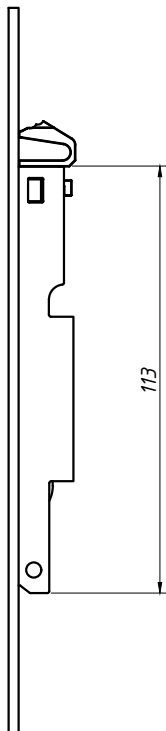


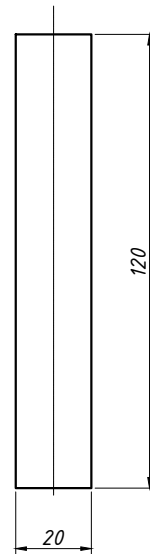
PERSPECTIVA:
(escala 1:2)



DIMENSÕES:
(escala 1:2)



USINAGEM:
(escala 1:2)



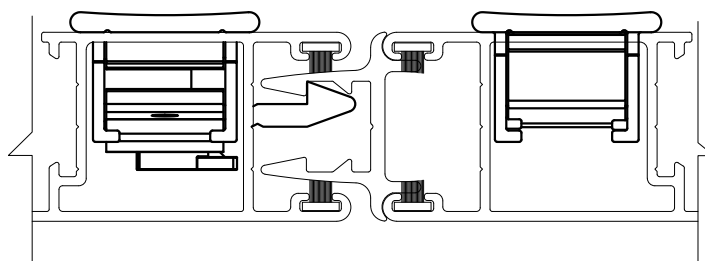
CARACTERÍSTICAS:

Componentes:	Matéria-prima:
Estrutura	Alumínio

Acabamento			
Preto	Fosco	Branco	Bronze

Embalagem	20 Conchas Cegas
-----------	------------------

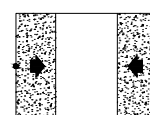
DETALHE DE APLICAÇÃO



(escala 1:1)

ACABAMENTOS AMADEIRADOS CONSULTAR PÁGINA 04
NO CATÁLOGO TÉCNICO DE COMPONENTES.

CÓDIGO	ACABAMENTO
CON503 PT	Preto
CON503 FS	Fosco
CON503 BC	Branco
CON503 BZ	Bronze



JANELAS
E PORTAS
DE CORRER