



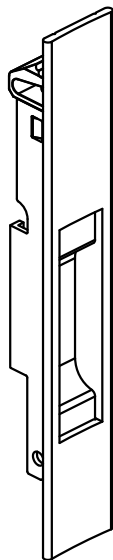
CONCHA CEGA DONÉR SLIDE | 158 MM

APLICAÇÃO:

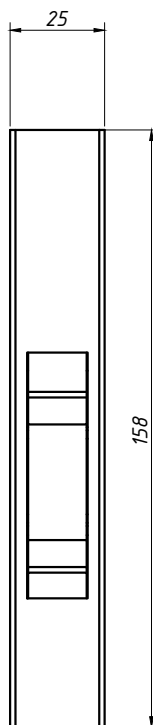
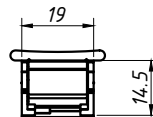
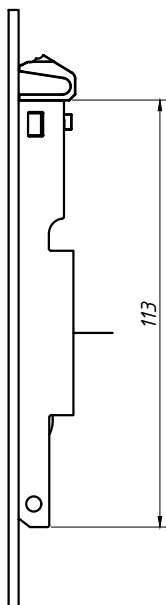
INOVA®, MASTER®, SMART2.0®,
NOSTRA 25®, NOSTRA 32®, SUPREMA®
GOLD®, MEGA 32 e D'ORO®, SP20®
HIDRO OFFICIAL® e ABSOLUTA®

Marco/2026-rev0

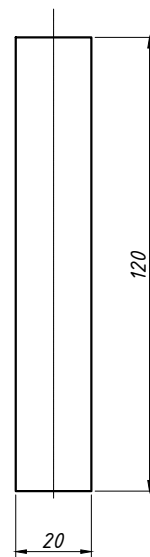
PERSPECTIVA:
(escala 1:2)



DIMENSÕES:
(escala 1:2)



USINAGEM:
(escala 1:2)



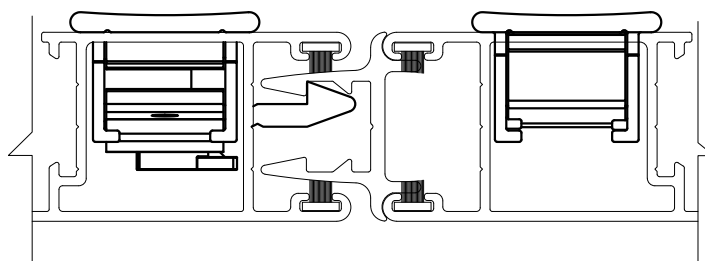
CARACTERÍSTICAS:

Componentes:	Matéria-prima:
Estrutura	Alumínio

Acabamento			
Preto	Fosco	Branco	Bronze

Embalagem	20 Conchas Cegas
-----------	------------------

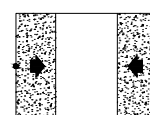
DETALHE DE APLICAÇÃO



(escala 1:1)

ACABAMENTOS AMADEIRADOS CONSULTAR PÁGINA 04
NO CATÁLOGO TÉCNICO DE COMPONENTES.

CÓDIGO	ACABAMENTO
CON504 PT	Preto
CON504 FS	Fosco
CON504 BC	Branco
CON504 BZ	Bronze



JANELAS
E PORTAS
DE CORRER